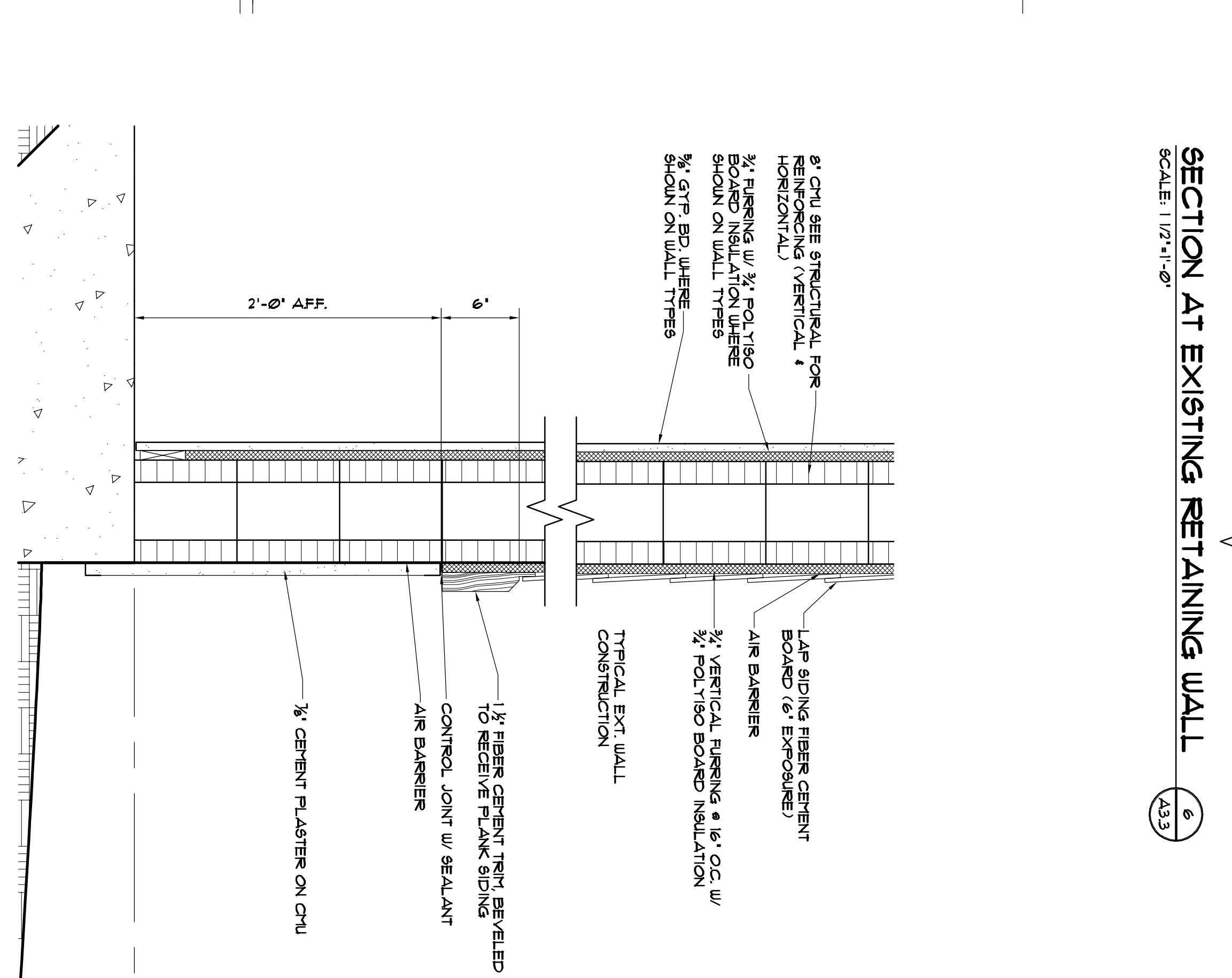
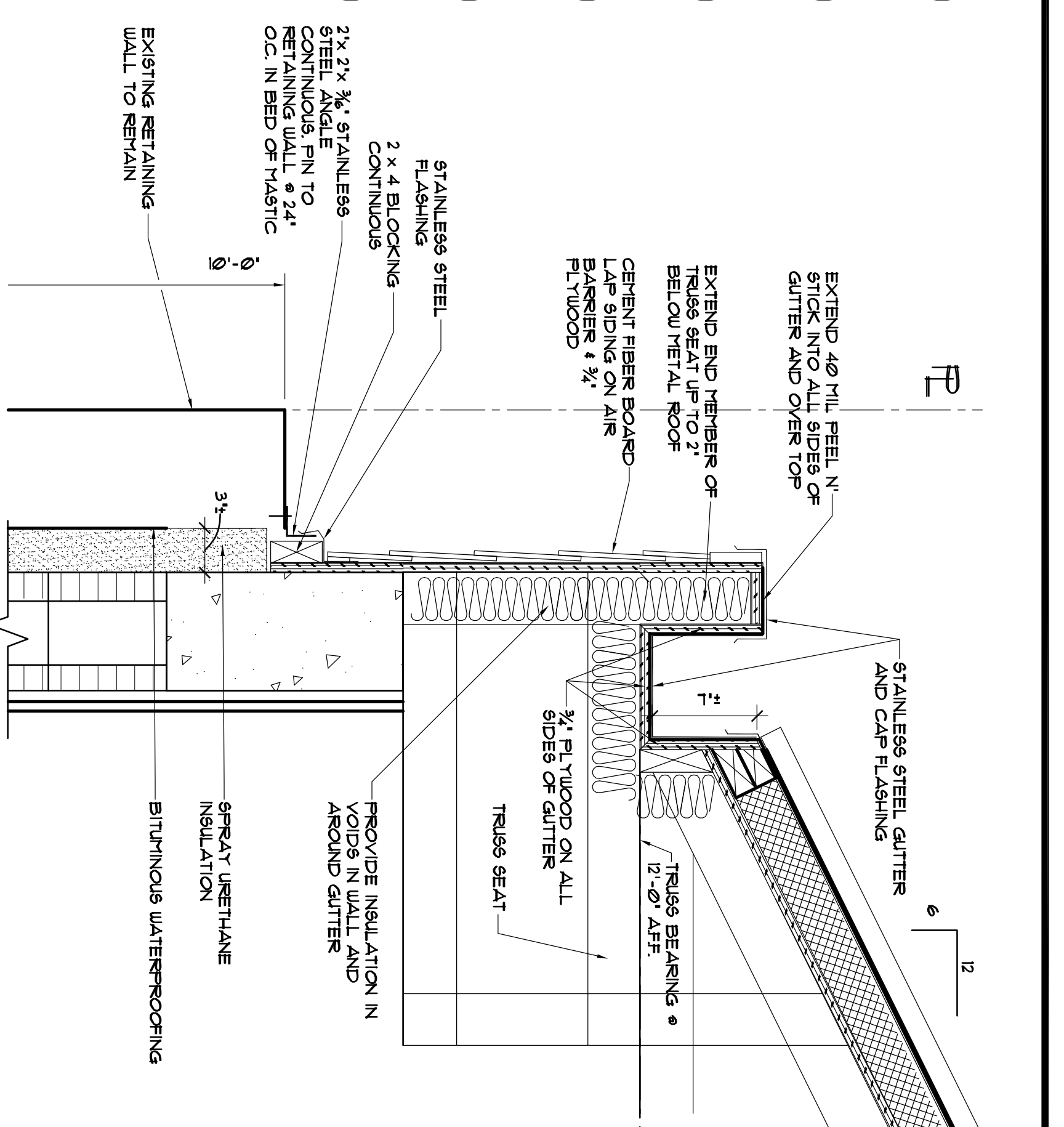
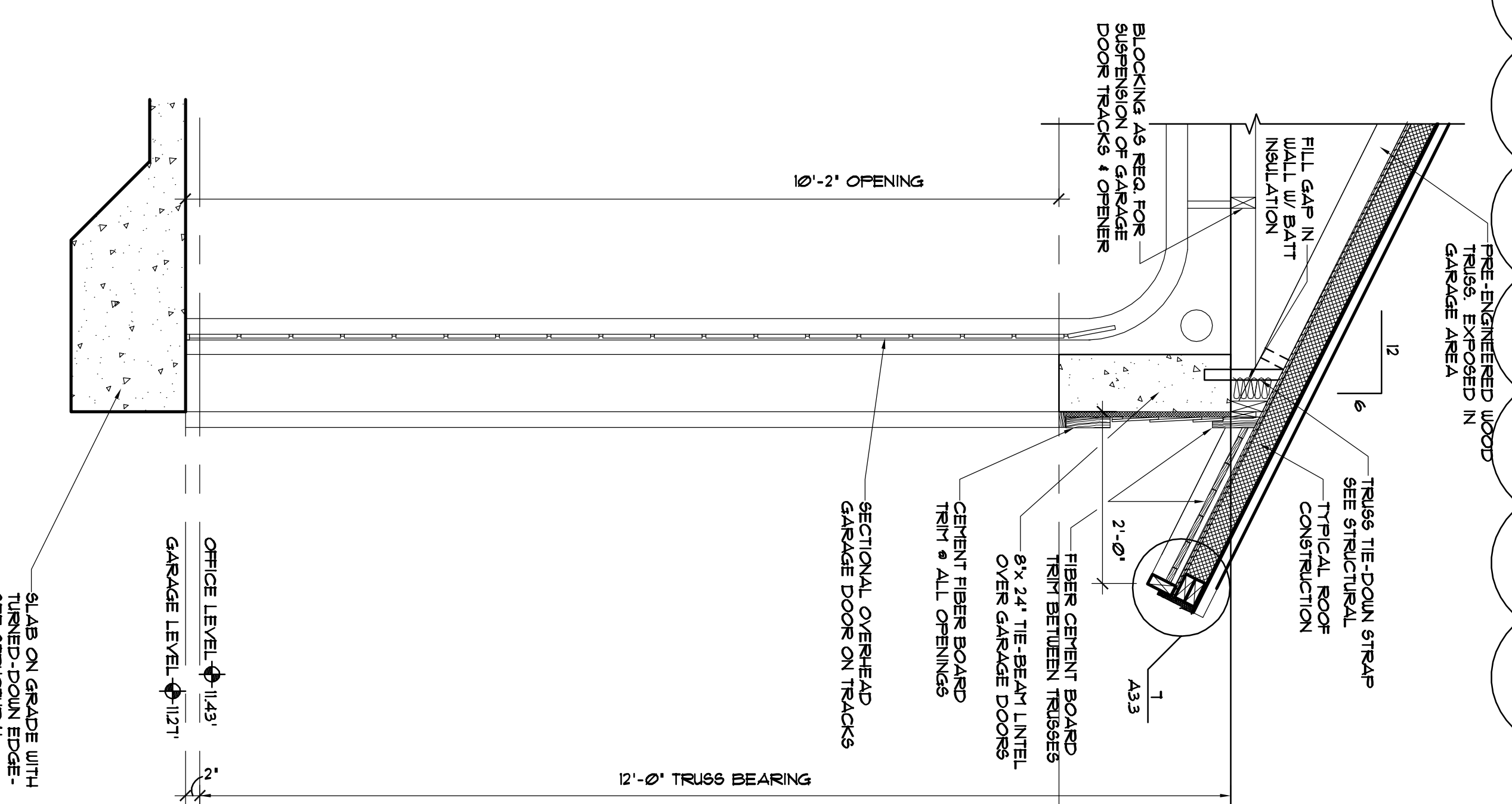
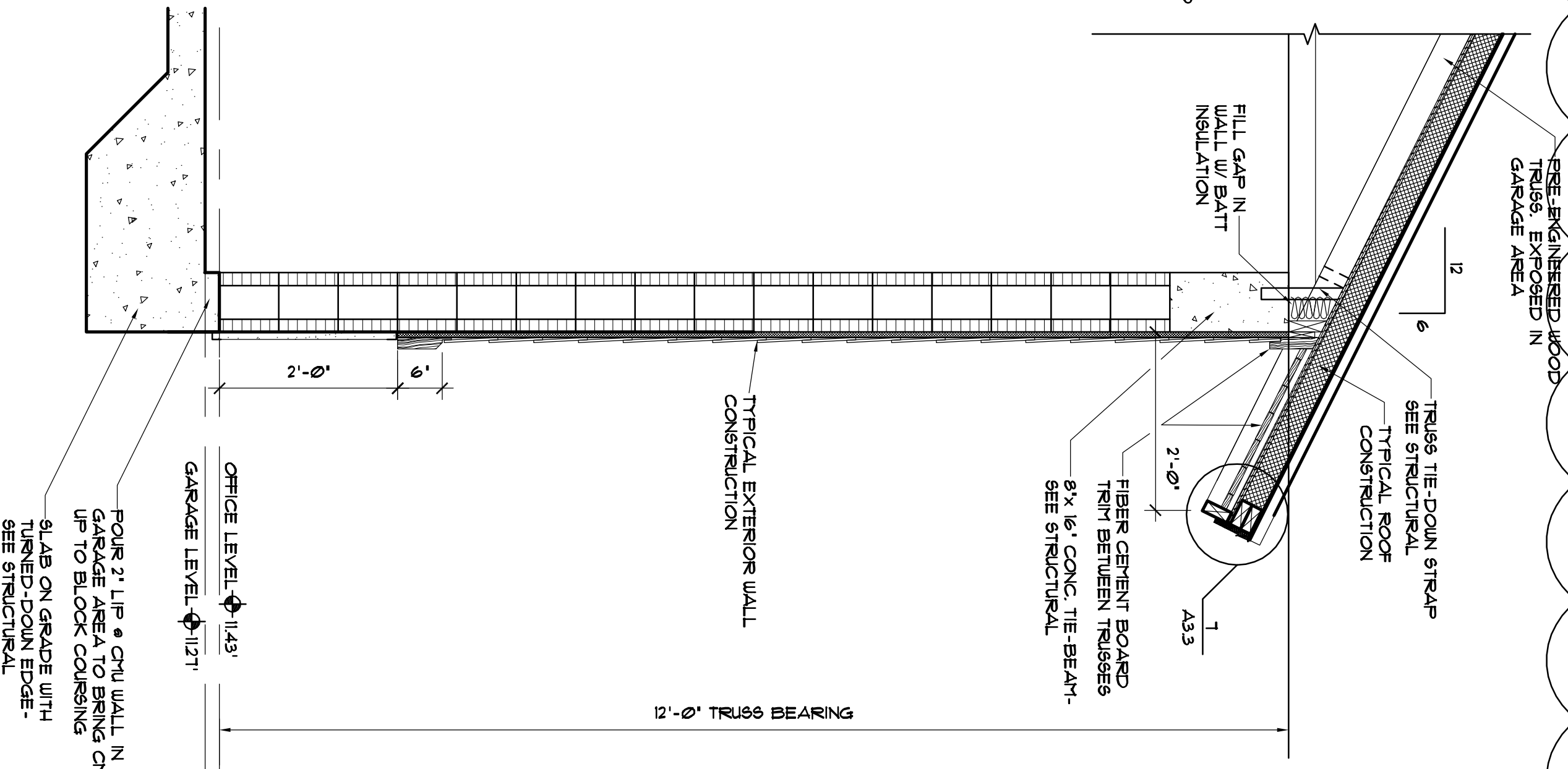
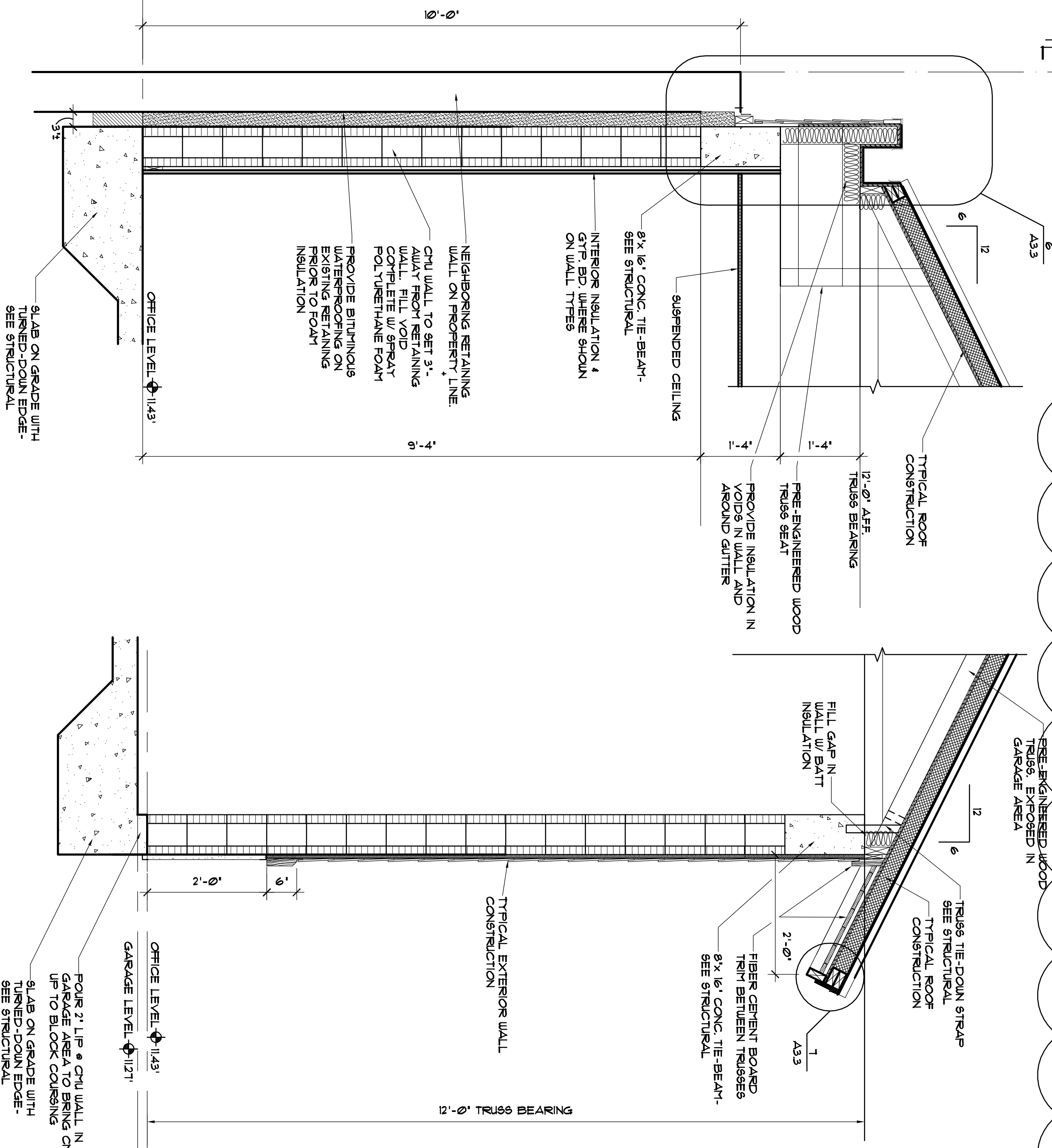


**TYPICAL ROOF CONSTRUCTION AT EAVE**  
SCALE: 1/2"=1'-0"

**TYPICAL ROOF CONSTRUCTION**  
SCALE: 1/2"=1'-0"



**SECTION AT EXISTING RETAINING WALL**  
SCALE: 1/2"=1'-0"

**TYPICAL WALL SECTION**  
SCALE: 1/2"=1'-0"

**DESIGN, INC.**  
913 NORTH NOVA RD.  
HOLLY HILL, FL 32117  
AA 26000587  
PHONE (386) 255-8987  
FAX (386) 255-8989

NO.	REVISIONS	DATE
1	ADDENDUM #2	1/25/12

**COUNTY OF VOLUSIA**  
**CARDINAL AVENUE LIFEGUARD STATION**  
**CARDINAL AVENUE**  
**ORMOND BEACH, FLORIDA**

**SHEET**  
A3.3

PJT: 02209.05  
DATE: 9-2-11  
DRN BY: JMW  
DGN BY: JMW  
REV BY: -  
SCALE: -